



One Device Diagnoses ALL Five Vehicle Types!

- **UNLIMITED FREE**
Software updates
- **Multiple**
Brands/Models



- **Software does**
not expire
- **NO annual FEES**
- **8 Languages**

INSTRUCTIONS USAGE:

↔ Hardware connection

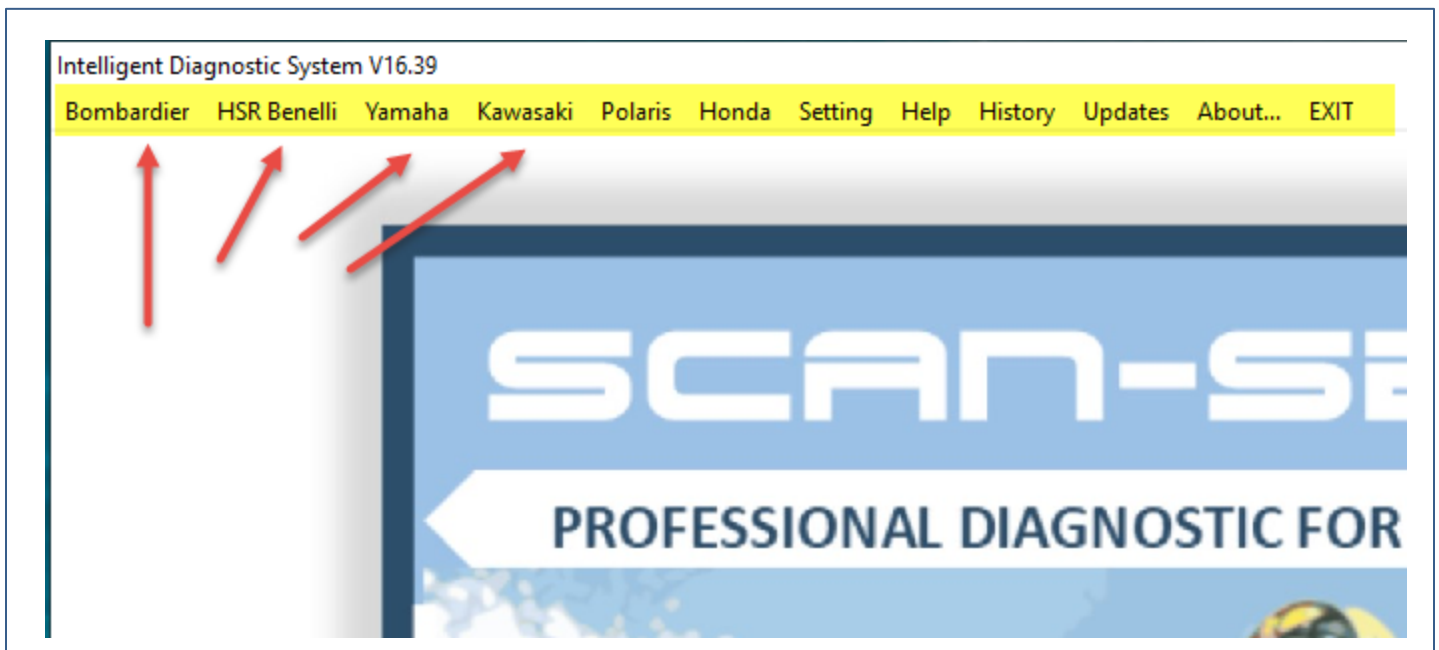


Software handling

Before you can use your tool you need to connect the iDS to your computer and a vehicle or vessel you like to diagnose.



After you connected computer – iDS – vessel/vehicle you can start your software



Choose brand and model

Software general information

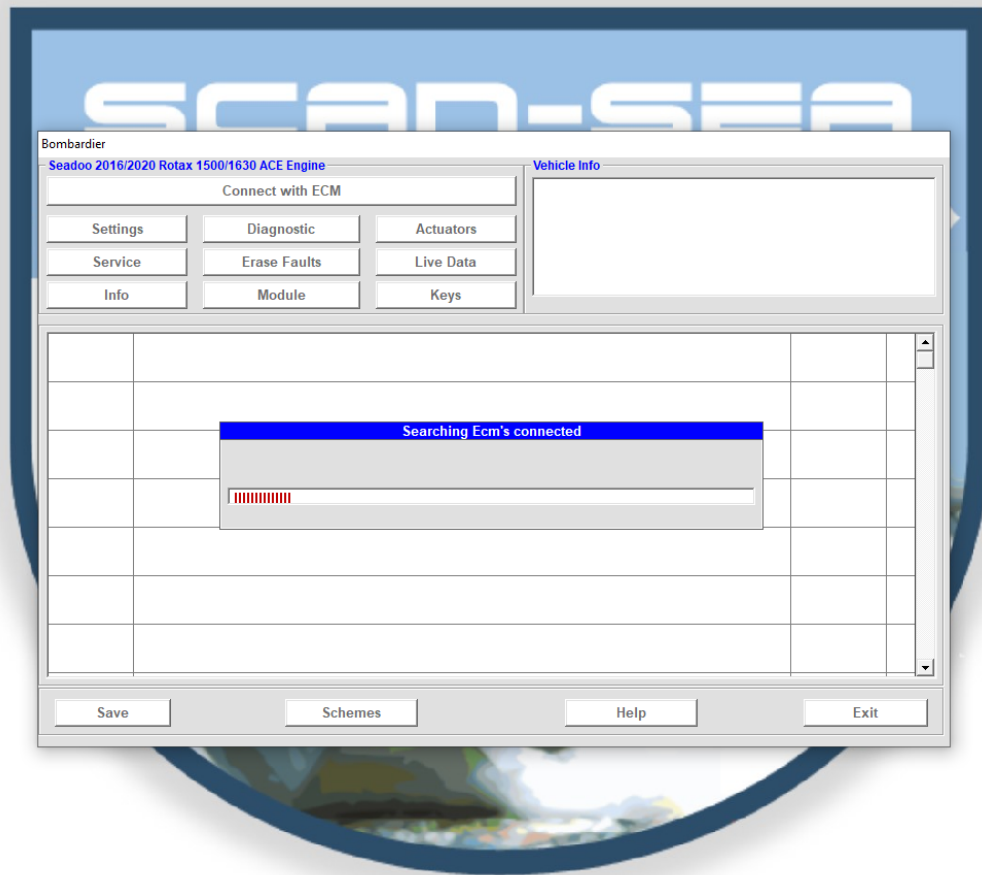
- The software interface is in general the same for each application. This makes it easy to handle different applications.
- Depending on the manufacturer of the vehicle or vessel you have more or less services, setting, diagnostics, live data, actuators, etc. to choose from.
- Each software application is basically self-explaining. However, there are some special things that might be interesting and/or new for the user (please check out “Good to know”!

The following screen shots are examples how to work with the software applications



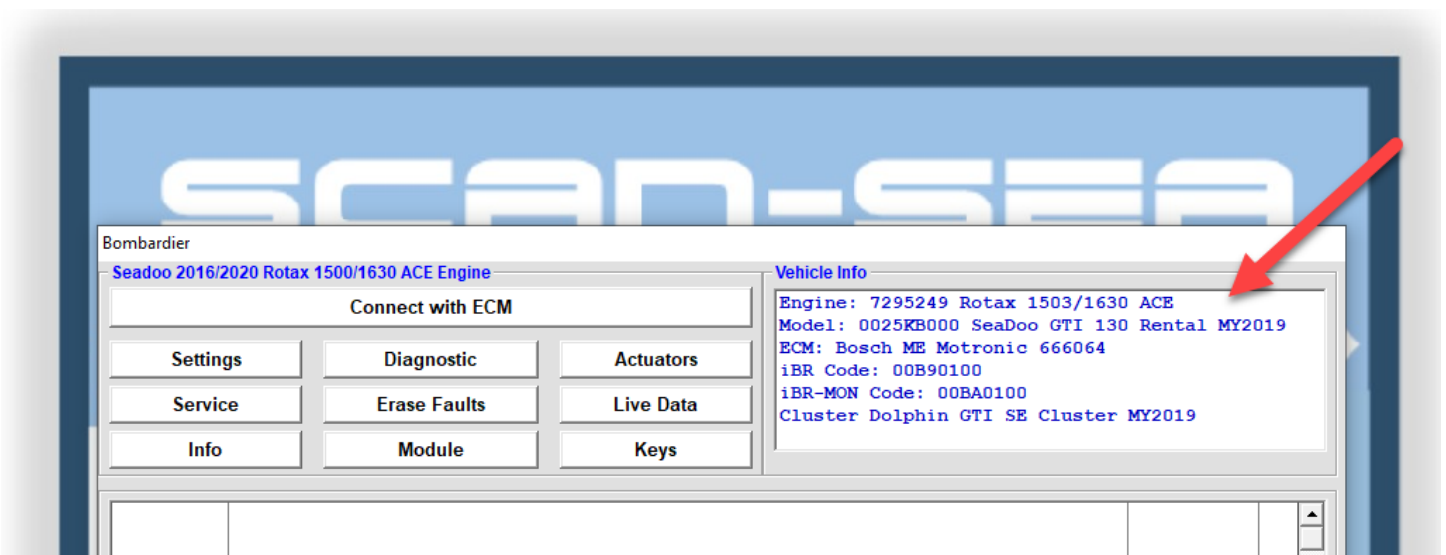
Select the correct brand/model from the “drop down menu”.

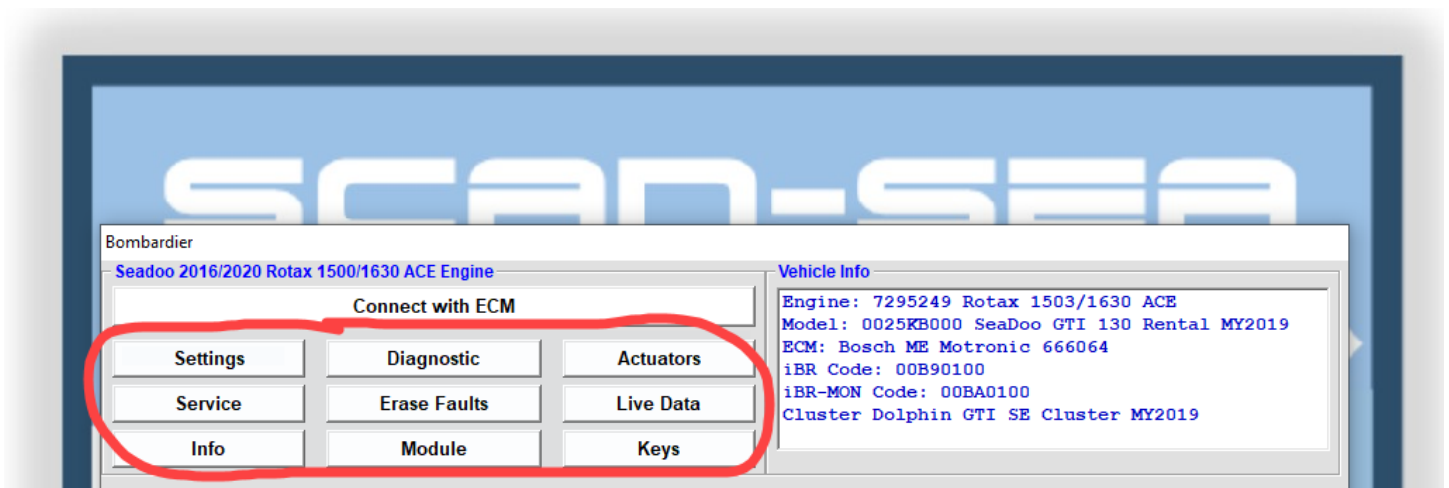
Intelligent Diagnostic System V16.40



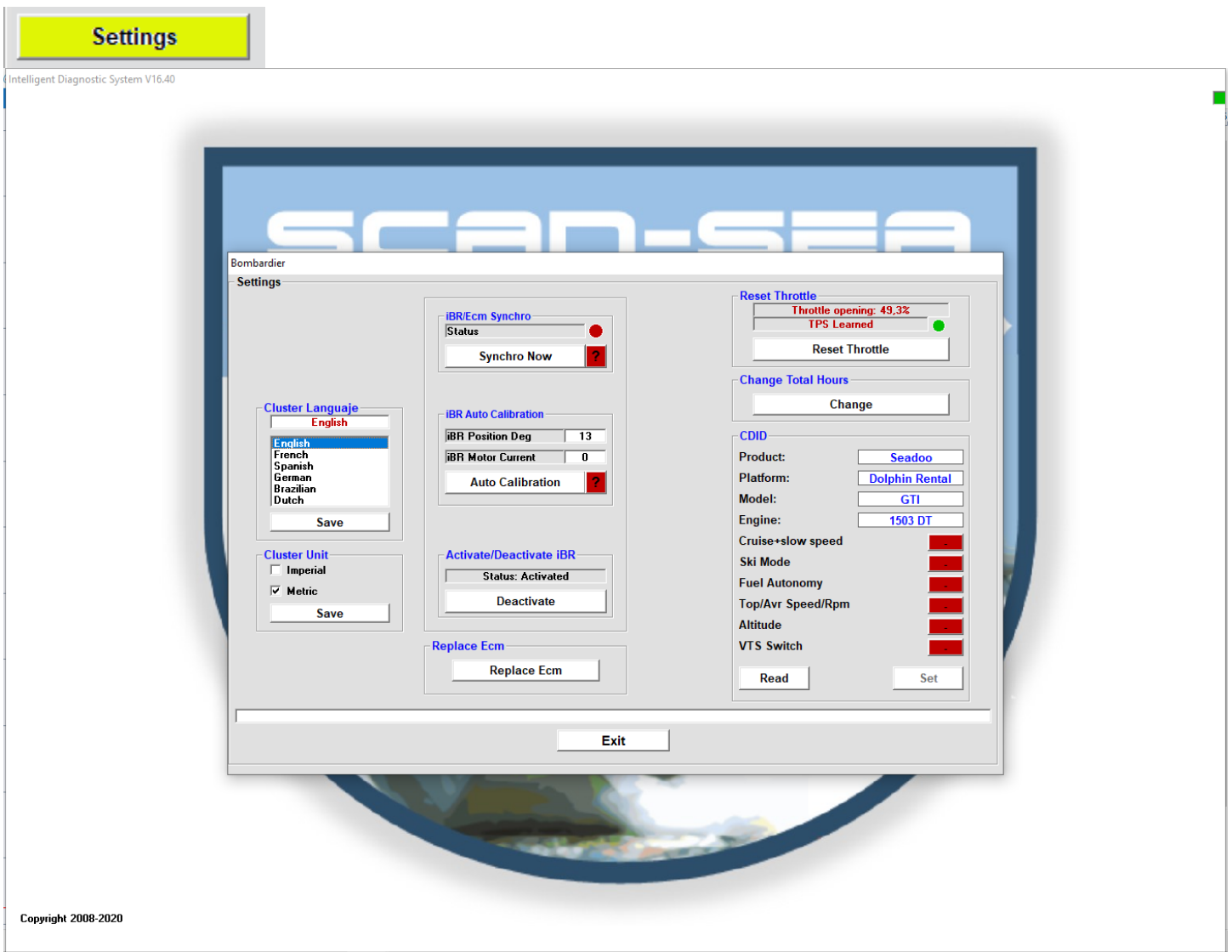
Copyright 2008-2020

Always the first button to use "Connect with the ECM". When the connection has been established the vehicle vessel data will be shown in the data window (upper right corner)





All other buttons are now highlighted and ready to use



Service

Intelligent Diagnostic System V16.40

Bombardier
SeaDoo 2016/2020 Rotax 1500/1630 ACE Engine

Connect with ECM

Settings Diagnostic Actuators
Service Erase Faults Live Data
Info Module Keys

Vehicle Info
Engine: 7295249 Rotax 1503/1630 ACE
Model: 0025KB000 SeaDoo GTI 130 Rental MY2019
ECM: Bosch ME Motronic 666064
iBR Code: 00B90100
iBR-MON Code: 00BA0100
Cluster Dolphin GTI SE Cluster MY2019

Service

Service
What is this?

Total vehicle hours: 763h 38m
Last Service Hours: 795h 57m
Last Service: 20-05-09
Done by: 04639 ☐ Change

Engine Total Hours: 795h 57m
Maintenance hours: 795h 57m
Maintenance counter: 5
Maintenance Interval: 100h 0m

Reset Service ☐ Exit

Copyright 2008-2020

All screen shots show examples (in this case SEA DOO PWC), how the software works in general. This maybe a little different from manufacturer to manufacturer, depending on their diagnostic strategy and stored data in the ecm. Our software can work with this stored data only!

Diagnostic

Intelligent Diagnostic System V16.40

Bombardier

Seadoo 2016/2020 Rotax 1500/1630 ACE Engine

Vehicle Info

Engine: 7295249 Rotax 1503/1630 ACE
 Model: 0025KB000 SeaDoo GTI 130 Rental MY2019
 ECM: Bosch ME Motronic 666064
 iBR Code: 00B90100
 iBR-MON Code: 00BA0100
 Cluster Dolphin GTI SE Cluster MY2019

Connect with ECM

Settings

Diagnostic

Actuators

Service

Erase Faults

Live Data

Info

Module

Keys

Cod: P2621 EMS	Electrical lower-range violation (TPS 1)	Active	?
Cod: P212C EMS	Electrical lower-range violation (TPS 2)	Active	?
Cod: P2620 EMS	TPS value: Not plausible.	Active	?
Cod: P1550 EMS	Otas sensor: Voltage not plausible.	Active	?
Cod: P0122 EMS	Throttle Position Sensor	Active	?
Cod: P0222 EMS	TAS 2(Throttle Accelerator sensor) fault	Active	?
Cod: P0546 EMS	Exhaust gas temperature sensor	Active	?

Save

Schemes

Help

Exit

Copyright 2008-2020

Cod: P2621 EMS Electrical lower-range violation (TPS 1): Active

Fault Explanation

Damaged throttle actuator, damaged circuit wires, damaged or disconnected connector or damaged ECM

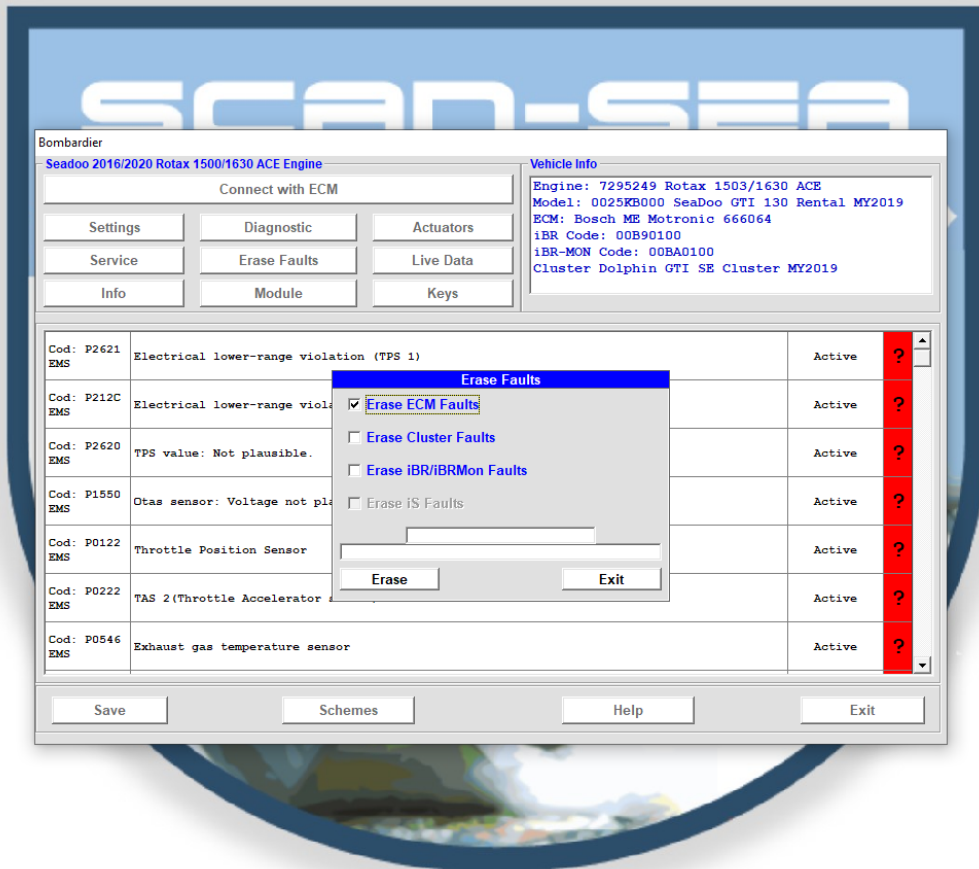
Possible Root Cause

Note

Exit

Erase Faults

Intelligent Diagnostic System V16.40



Copyright 2008-2020

All screen shots show examples (in this case SEA DOO PWC), how the software works in general. This maybe a little different from manufacturer to manufacturer, depending on their diagnostic strategy and stored data in the ecm. Our software can work with this stored data only!

Module

Intelligent Diagnostic System V16.40

Bombardier
SeaDoo 2016/2020 Rotax 1500/1630 ACE Engine

Connect with ECM

Settings Diagnostic Actuators
Service Erase Faults Live Data
Info Module Keys

Vehicle Info
Engine: 7295249 Rotax 1503/1630 ACE
Model: 0025KB000 SeaDoo GTI 130 Rental MY2019
ECM: Bosch ME Motronic 666064
iBR Code: 00B90100
iBR-MON Code: 00BA0100
Cluster Dolphin GTI SE Cluster MY2019

Modules
Syncro
What is this?

ECM		CLUSTER	
BRP Assembly:	0420464200	BRP Assembly:	278003580
BRP Hw N.:	0000464225	Supplier Part:	006JVWA03
Diagnosis Code:	00880000	Supplier Soft:	S01929A03
Soft File Name:	7A163PG0FS1	Serial number:	580A25618144
Software Date:	07/06/2018	Diagnosis Code:	00F60200
V.I.N.:	YDV40061J819	V.I.N.:	YDV40061J819
Vehicle Model:	25KB	Vehicle Model:	25KB
Customer:	itour adventure	Cluster Model:	N/A
Security Code:	0088464225	Security Code:	0088464225
Engine	7295249		

IBR		IBRMON	
BRP Assembly:	278003292	BRP Assembly:	278003292
Supplier Part:	27800329	Supplier Part:	27800329
Supplier Soft:	S0179681	Supplier Soft:	S0179880
Serial number:	292A34215164	Serial number:	292A34215164
V.I.N.:	YDV80507E515		
Vehicle Model:			

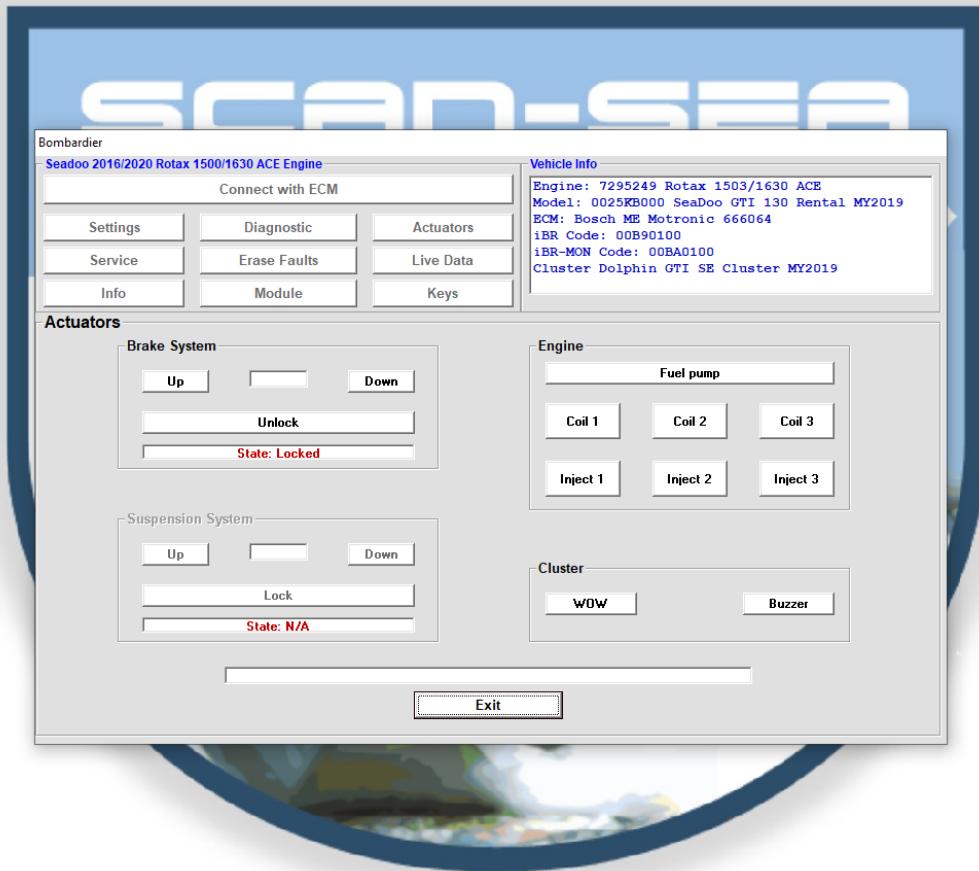
Exit

Copyright 2008-2020

All screen shots show examples (in this case SEA DOO PWC), how the software works in general. This maybe a little different from manufacturer to manufacturer, depending on their diagnostic strategy and stored data in the ecm. Our software can work with this stored data only!

Actuators

Intelligent Diagnostic System V16.40



Copyright 2008-2020

All screen shots show examples (in this case SEA DOO PWC), how the software works in general. This maybe a little different from manufacturer to manufacturer, depending on their diagnostic strategy and stored data in the ecm. Our software can work with this stored data only!

Live Data

Intelligent Diagnostic System V16.40

The screenshot displays the Scan-SEA diagnostic software interface. At the top, the 'SCAN-SEA' logo is visible. Below it, the 'Bombardier' section is active, showing 'Seadoo 2016/2020 Rotax 1500/1630 ACE Engine'. The interface is divided into several sections:

- Connect with ECM:** A section with buttons for 'Settings', 'Diagnostic', 'Actuators', 'Service', 'Erase Faults', 'Live Data', 'Info', 'Module', and 'Keys'.
- Vehicle Info:** A section displaying vehicle details:
 - Engine: 7295249 Rotax 1503/1630 ACE
 - Model: 0025KB000 Seadoo GTI 130 Rental MY2019
 - ECM: Bosch ME Motronic 666064
 - 1BR Code: 00B90100
 - 1BR-MON Code: 00BA0100
 - Cluster Dolphin GTI SE Cluster MY2019
- Monitoring:** A section displaying live data for various engine parameters:
 - Intake Temperat.: -46 °C
 - Intake Pressure: 0,00
 - Engine Temperat.: -46 °C
 - Voltage Battery: 12,00
 - Exhaust Temperat.: 90 °C
 - Throttle Angle: 49,3 %
 - Engine Speed: 0 Rpm
 - Vehicle Speed: 0

At the bottom of the Monitoring section, there is a red progress bar and two buttons: 'Start' and 'Stop'.

Copyright 2008-2020

All screen shots show examples (in this case SEA DOO PWC), how the software works in general. This maybe a little different from manufacturer to manufacturer, depending on their diagnostic strategy and stored data in the ecm. Our software can work with this stored data only!

Keys

Intelligent Diagnostic System V16.40

Bombardier
SeaDoo 2016/2020 Rotax 1500/1630 ACE Engine

Connect with ECM

Settings Diagnostic Actuators
Service Erase Faults Live Data
Info Module Keys

Vehicle Info
Engine: 7295249 Rotax 1503/1630 ACE
Model: 0025KB000 SeaDoo GTI 130 Rental MY2019
ECM: Bosch ME Motronic 666064
iBR Code: 00B90100
iBR-MON Code: 00BA0100
Cluster Dolphin GTI SE Cluster MY2019

Keys

Key not programmed
Key on DessPost: 019231DD110000D6 Read Key

Key	ID	Type
Key 1	01CD8B6E065002CC	Normal
Key 2	01D971360750023F	Rental
Key 3	017BB59507500211	Rental
Key 4	017FD2740750024B	Rental
Key 5	Free	
Key 6	Free	
Key 7	Free	
Key 8	Free	
Key 9	Free	
Key 10	Free	

Anti-Theft System (State: Activated)
☒ Activate ☐ Deactivate Set

Options

Add Key: Normal
Add Key: Learning
Add Key: Rental

Erase Key
Erase All Keys

Exit

Copyright 2008-2020

All screen shots show examples (in this case SEA DOO PWC), how the software works in general. This maybe a little different from manufacturer to manufacturer, depending on their diagnostic strategy and stored data in the ecm. Our software can work with this stored data only!

Save/Print

Bombardier SportBoat

SportBoat Bosch Ecm			Vehicle Data
Connect with ECM			SportBoat 1503 SCIC ETC 2011
Settings	Diagnostic	Actuators	Engine: M7435955
Service	Erase Faults	Live Data	Model: 00078BW00
Info	Module	Keys	ECM: Bosch ME Motronic
			VIN: USCEC19501J011

EMS Faults detected: 1

Fault Code: P0340
CamShaft 1: Signal Error
Possible Causes:
Damaged sensor, damaged circuit wires, damaged ECM output pins or damaged tooth wheel.
Service actions:
For the CAPS, check for 12 volts on sensor connector pin 3.
Check continuity for circuits A-D4, A-E2 and terminal 4 on engine connector.
Check FUSE#2.
Engine must run to erase the corrected fault.

Save **Help** **Exit**

Run Diagnostic first.

With the fault codes on the screen, click the "SAVE" button.

Vehicle Info

Technician: John Smith

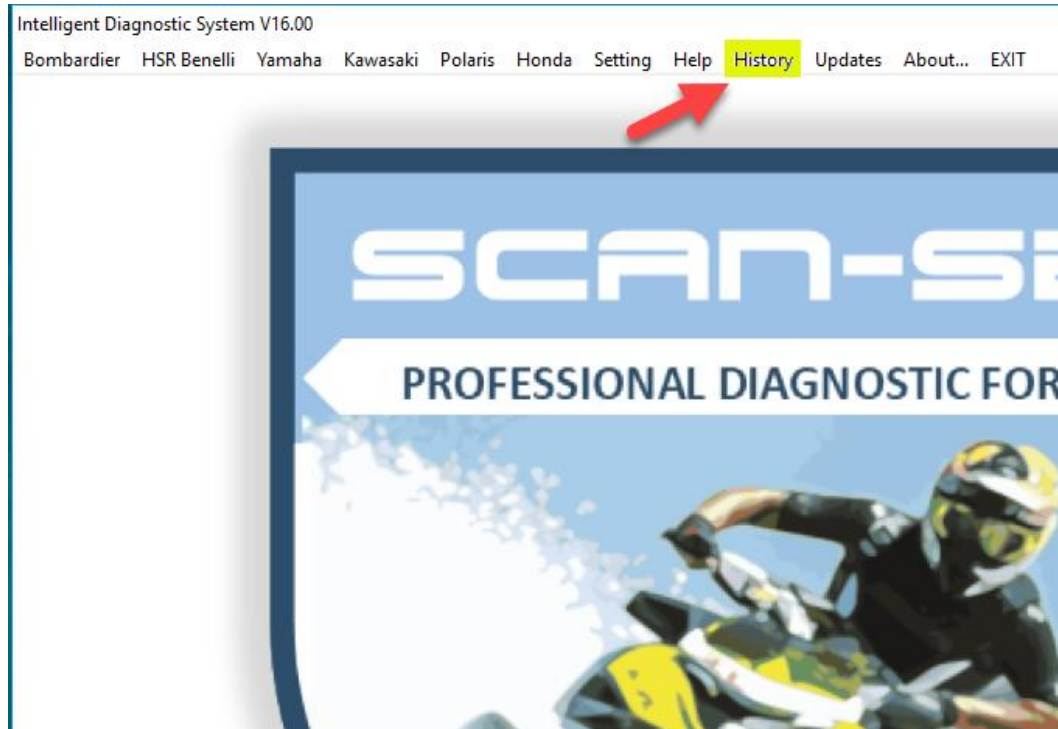
Vehicle Model: 100-X Plates: 5500

Owner: Alan Bodwin

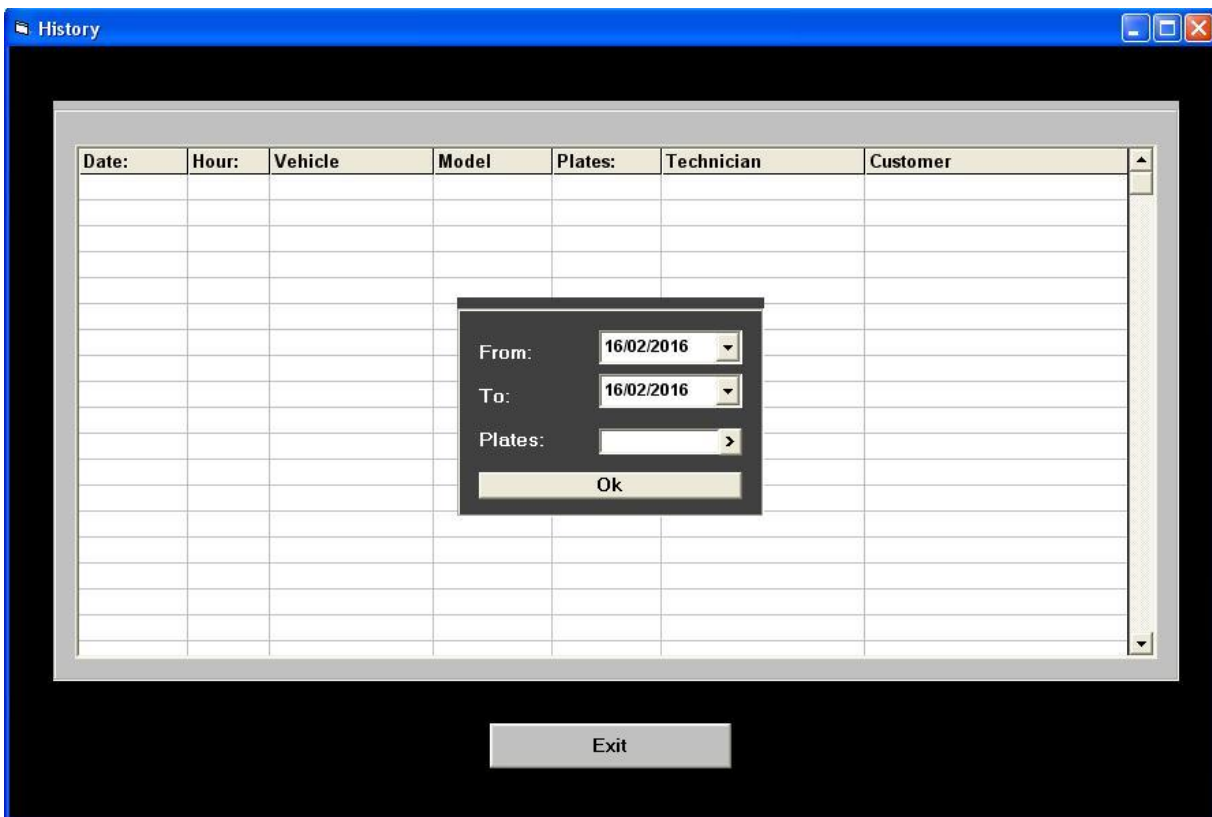
Note:

Save **Show List** **Exit**

Type in your information and click "SAVE" button.



Click on History



Choose Dates “from” – “to”

[illegible]

Choose one of the files

The screenshot shows a software window titled 'History' with a blue header bar. Inside, there's a 'Reports' section. At the top of this section, there are fields for 'Fecha:' (16/02/2016), 'Hora:' (8:38:00), 'Customer:' (Alan Smith), 'Vehicle:' (Bombardier 4-Tec), 'Model:' (RXP-X), 'Plates:' (5581AGP), and 'Technician:' (John Bodwin). Below these is a 'Note:' field. The main area of the 'Reports' section is titled 'Faults detected: 11' and contains two detailed fault entries. The first entry is for 'Fault Code: 050528 EMS Occurred Fault', describing an idle bypass valve output stage fault with possible causes like a damaged actuator or wires, and service actions like checking ohms between pins. The second entry is for 'Fault Code: 012321 EMS Occurred Fault', describing a throttle position sensor voltage issue with possible causes like a damaged sensor or misalignment, and service actions like checking voltages on sensor connector pins. At the bottom of the 'Reports' section are 'Print' and 'Close' buttons. Below the entire window is a large 'Exit' button.

History

Reports

Fecha: 16/02/2016 Hora: 8:38:00 Customer: Alan Smith

Vehicle: Bombardier 4-Tec Model: RXP-X Plates: 5581AGP

Technician: John Bodwin Note:

Faults detected: 11

Fault Code: 050528 EMS Occurred Fault
Idle bypass valve
Output stage fault
Possible causes:
Damaged actuator, damaged circuit wires, connector or damaged ECM output pins.
Service actions:
Check for approximately 50 ohms between pins A and D and also between pins B and C of the idle bypass valve. Check for damaged circuit wires.
Check 50 ohms between pins A-36 and A-35 and also between pins A-37 and A-38.

Fault Code: 012321 EMS Occurred Fault
Throttle Position Sensor
Voltage too high.
Possible causes:
Damaged sensor, circuit wires, connector or ECM pins.
Damaged or out of alignment throttle bodies or sensor.
Service actions:
Check for 0 volt on sensor connector pin 1, 5 volts on sensor connector pin 2 and 4.5 to 5 volts on sensor connector pin 3.

Print Close

Exit

Click "Print" to print out (or to file) the information

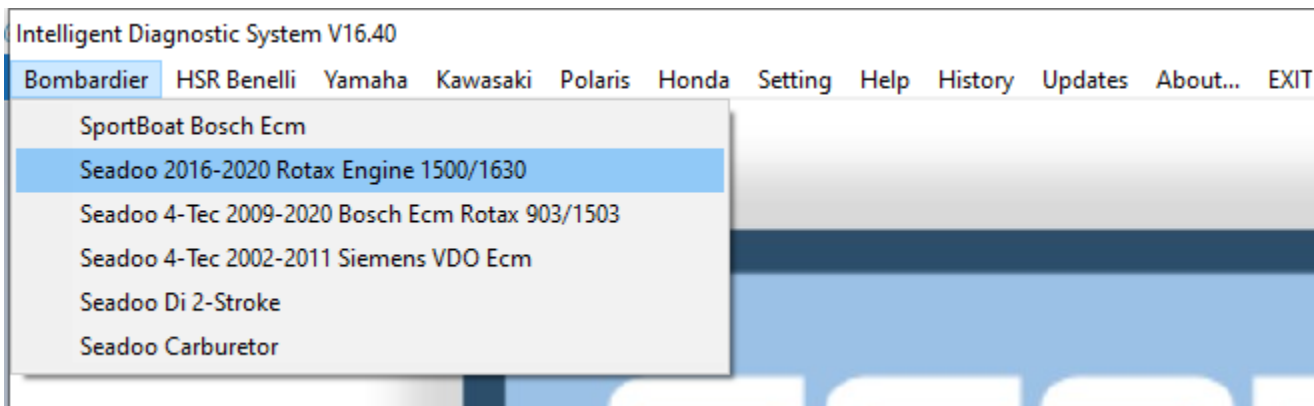
ECM power

Whatever vehicle or vessel you try to connect to, it is a **MUST** to power up the ecm.

An ECM that is not powered up is impossible to connect to!

- Always have a lanyard or key for the power up attached to the vehicle/vessel.
- If possible/necessary turn on the ignition.
- For some tasks the engine even has to run
- Make sure you're using external power if necessary (check the special power up for the relevant application)

Software application "OPTIONS"



- It is **VERY important to choose the correct software option** from the respective drop down menu! Most models have a unique protocol and a unique developed way of connection. Choosing a wrong software option can result in damaging the tool.

Tool handling

- During software starting process and / or during model updates, please make sure not to:
 - power down the computer
 - run laptop battery empty
 - disconnect USB cable

This could damage the iDS!

Software updates

- It is very important to keep your software up to date. Please check frequently for updates. Our engineers are working very hard and update every application multiple time during the year.
- If you ever experience a problem to establish a connection to a vehicle/vessel, before you asked for support PLEASE check if you're using the latest software version.





CHECK FOR ACTUAL/AVAILABLE SOFTWARE VERSIONS



Support Request

- Before you use the support request option, please visit our [online support page](#). Many issues can be fixed by checking this page first. This gives you a quicker solution and is saving us time on the other hand.

Support page



- In case you need to ask for help, please make sure you're always providing the following information:
 - brand
 - model
 - year
 - what connector cable are you using
 - what software option are you using
 - issue
 - screen shot of the complete software screen
 - picture of the ecm

You can use our online support request form



Or if you need to attach a picture etc. you can just use our regular email contact:

tool@sws1.com

(We're not using the regular email address on the web site, because of to many "Spam" emails)