

Personal Watercraft
SCAN-SEA

InBoard OutBoard
SCAN-MARINE

ATV/UTV Side by Side
SCAN-LAND

Motor Cycles
SCAN-BIKE

Snow Mobiles
SCAN-SNOW

One Device Diagnoses ALL Five Vehicle Types!

- **UNLIMITED FREE** Software updates
- **Multiple** Brands/Models
- **Software does not expire**
- **NO annual FEES**
- **8 Languages**

INSTRUCTIONS INSTALLATION:

- ⌚ **Page 1 - 6 Software download**
- 💾 **Page 7 - 10 Software installation**
- 💻 **Page 11 - 13 Starting Software**

SOFTWARE DOWNLOAD

You receive these information with your tracking email after your tool has been shipped.

DOWNLOAD INFORMATION

[Click here to open DOWNLOAD page](#)

← One click to the download page

Your Personal password is:

Ber1305Reh

← Your access password

(PASSWORD IS CASE SENSITIVE)

- The download will be available for 24 hours.
- You need to extract the "zip" file.
- You can save the files on a medium of your choice (e.g. disc or memory stick).
- Please confirm when you finished the download, by check-mark the confirmation form on the website.

These are your access information to the download page.

DIAGNOSTIC FOR POWERSPORTS!

Please type in the password
(case sensitive).

Password-protected area

This page is accessible with a valid password only.

Password:

Log in

Your personal [SOFTWARE DOWNLOAD](#) page for your Master Software



UPLOAD DATE: 10/29/2020

1. Download your master software
2. De-compress in separate file folder
3. Save files on disk, memory stick, or medium of your choice
4. [Please send confirmation form when finished](#)
5. Install software, IDS connected to computer
6. Start software (make sure computer is connected to the Internet)
7. [Check updates](#) (a newer version is maybe available)



SCAN-SEA Master Software



MasterSoftwareScanSeaV1639.zip
Compressed Archive in ZIP Format [21.3 MB]

Download



SCAN-MARINE Master Software



SCAN-LAND Master Software



MasterSoftwareScanLandV1299.zip
Compressed Archive in ZIP Format [32.7 MB]

Download



SCAN-BIKE Master Software



SCAN-SNOW Master Software



Please check mark below when
download completed and send!

Tom Tester download completed +

☐

☐ The Privacy Policy applies.

send

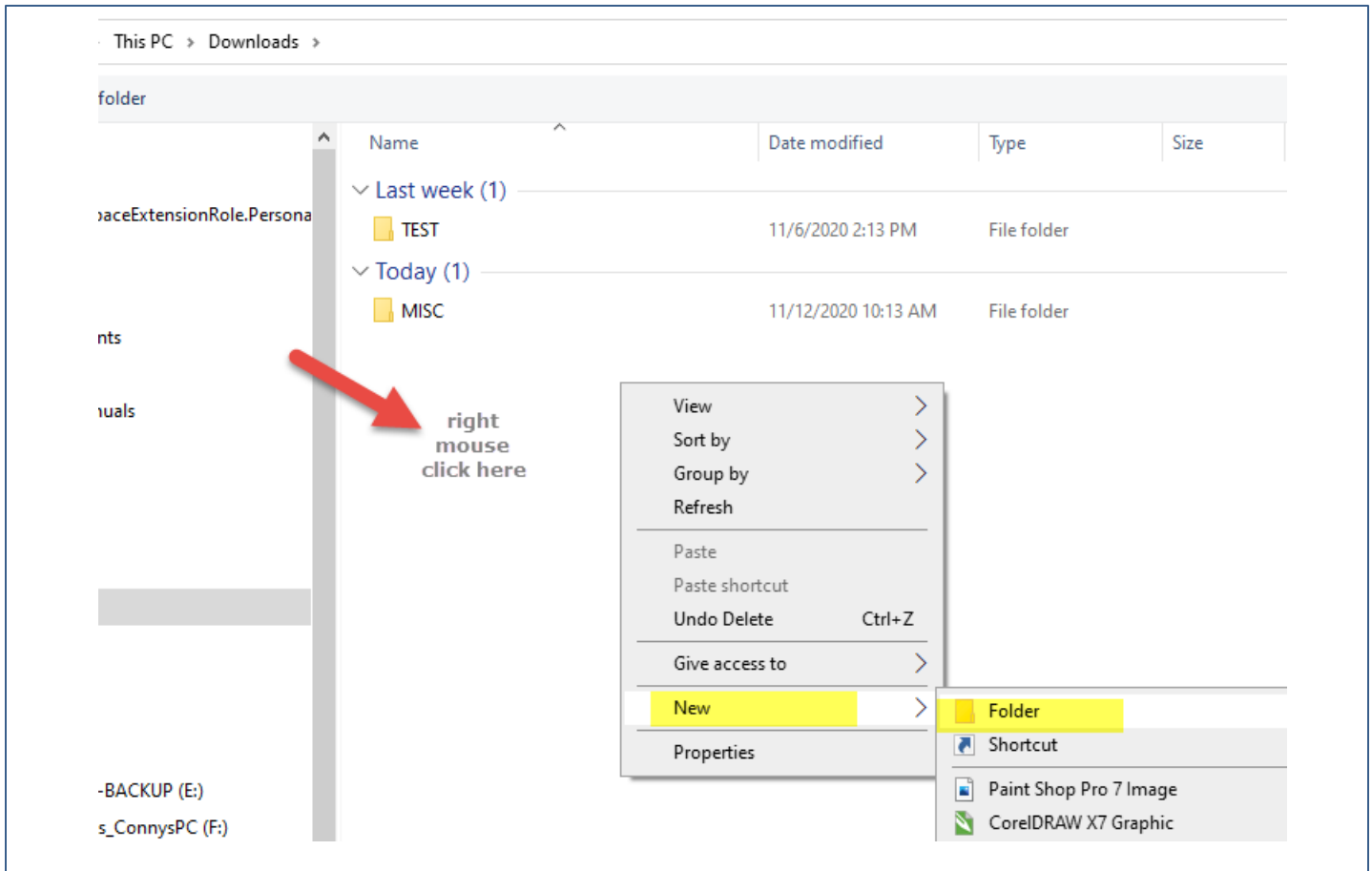
▲ Note: Please fill out the fields marked with an asterisk.



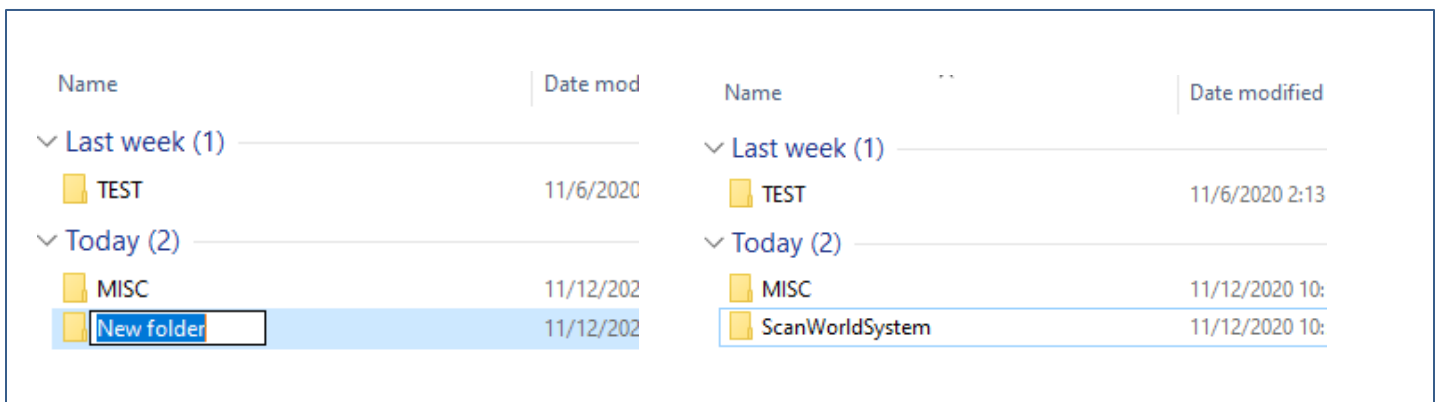
Please download the Master Software you purchased only!
Just click on the download button.

The Windows Device Manager opens automatically. You can choose your own location for the download. We suggest to create a new folder.

Right mouse click, pointing in the white field below the existing folder

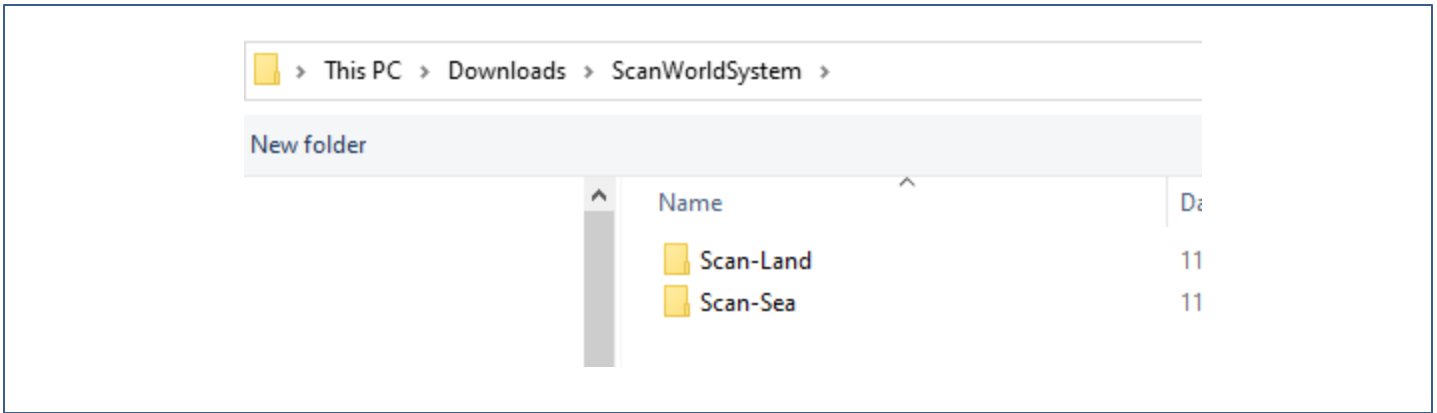


Select in the first window "New" and in the second "Folder" ...

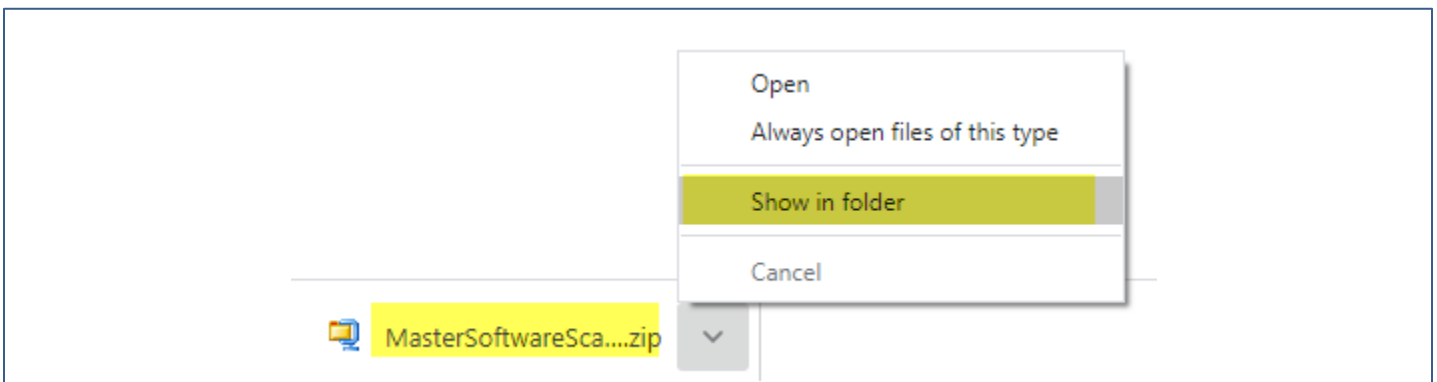


Override the default "New Folder" with a name of your choice, e.g. ScanWorldSystem

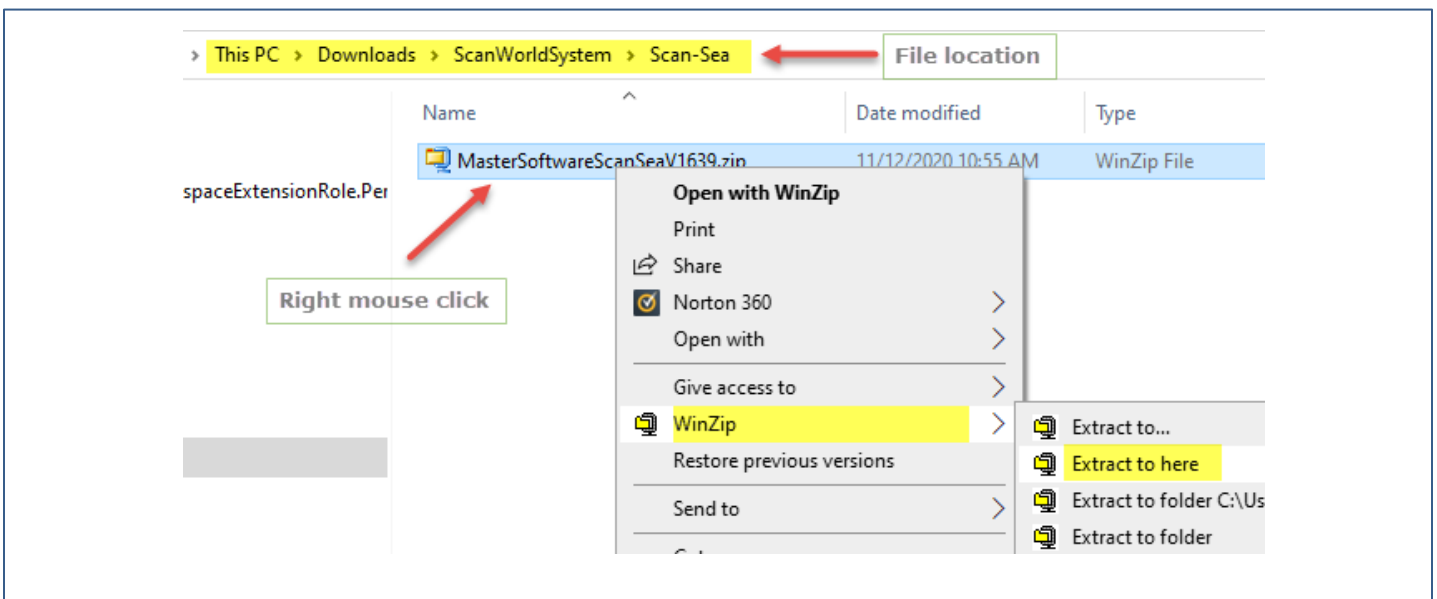
In case you download more than one software application you can create sub-folder such as:



After downloading the software a little window pops up in the lower left corner of your computer screen:

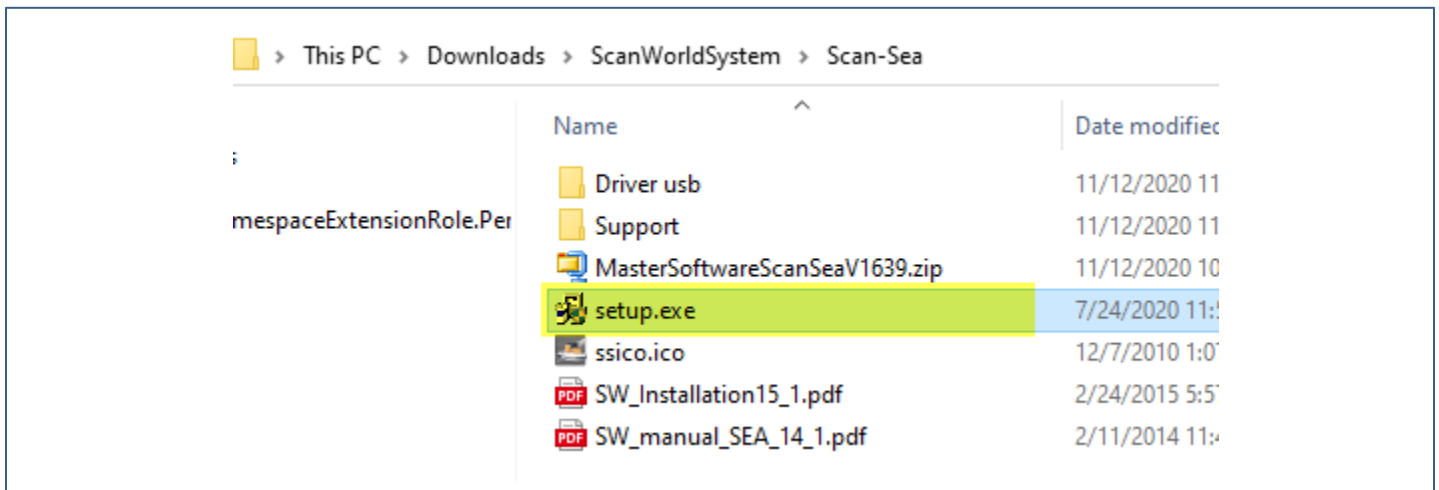


Choose "Show in folder"



Right mouse click on the downloaded file, choose WinZip and "Extract to here"

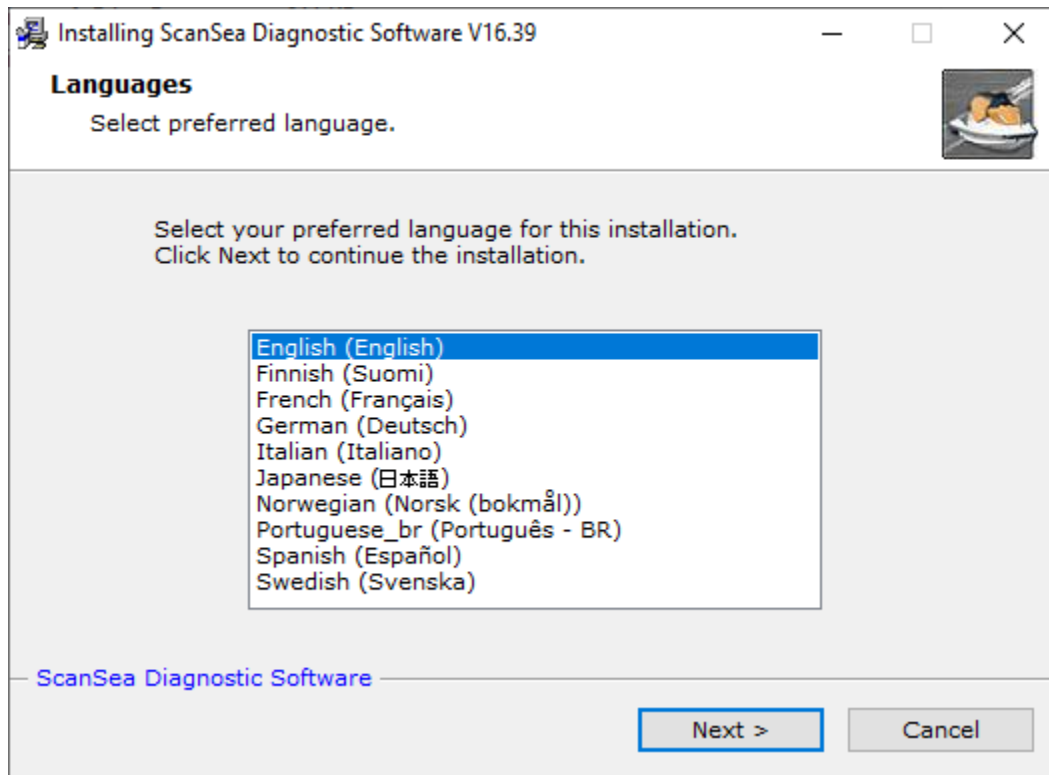
This how it looks after the extracting.



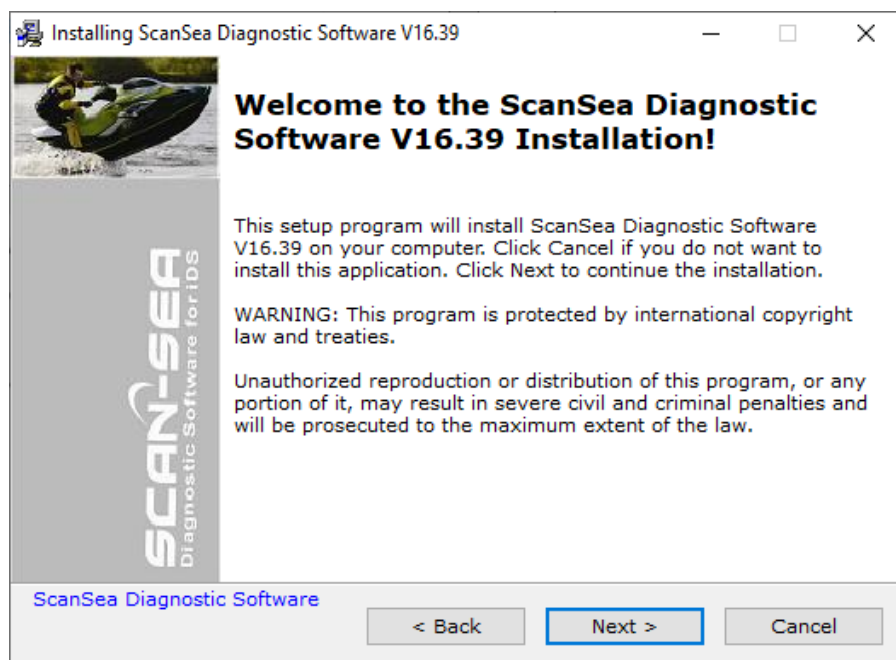
Double click on “setup.exe to start the software installation.

SOFTWARE INSTALLATION

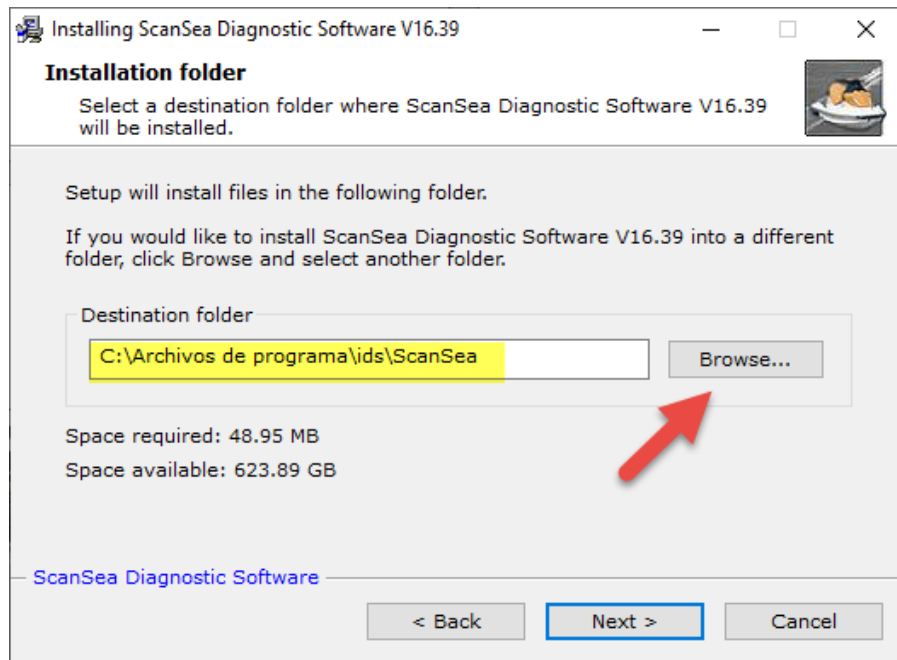
Double click on "setup.exe to start the software installation.



Select your language, or keep the default. Click Next ...



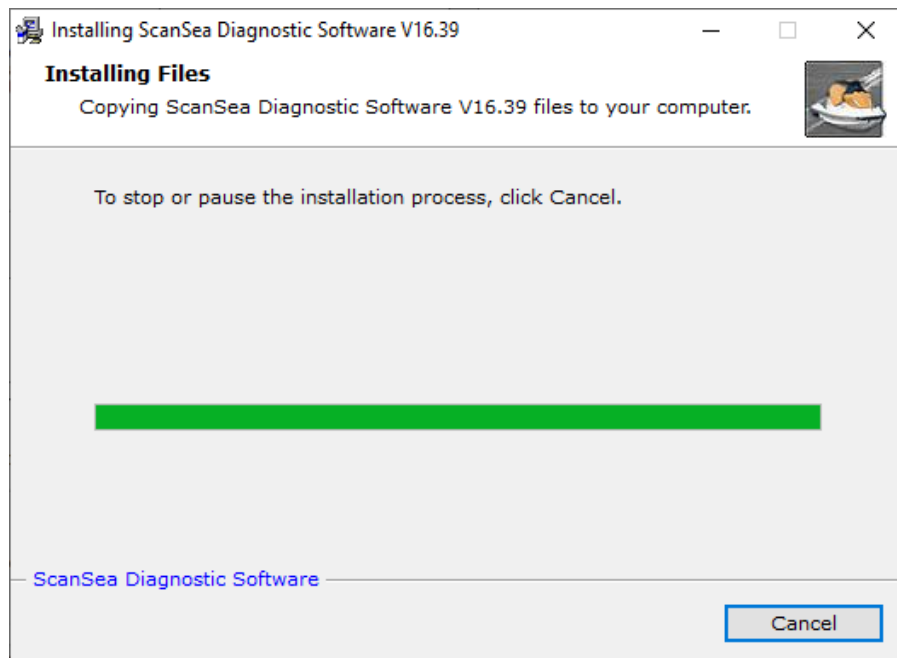
Click Next ...



You can choose your own location where the software will be saved by click Browse and select your own folder.

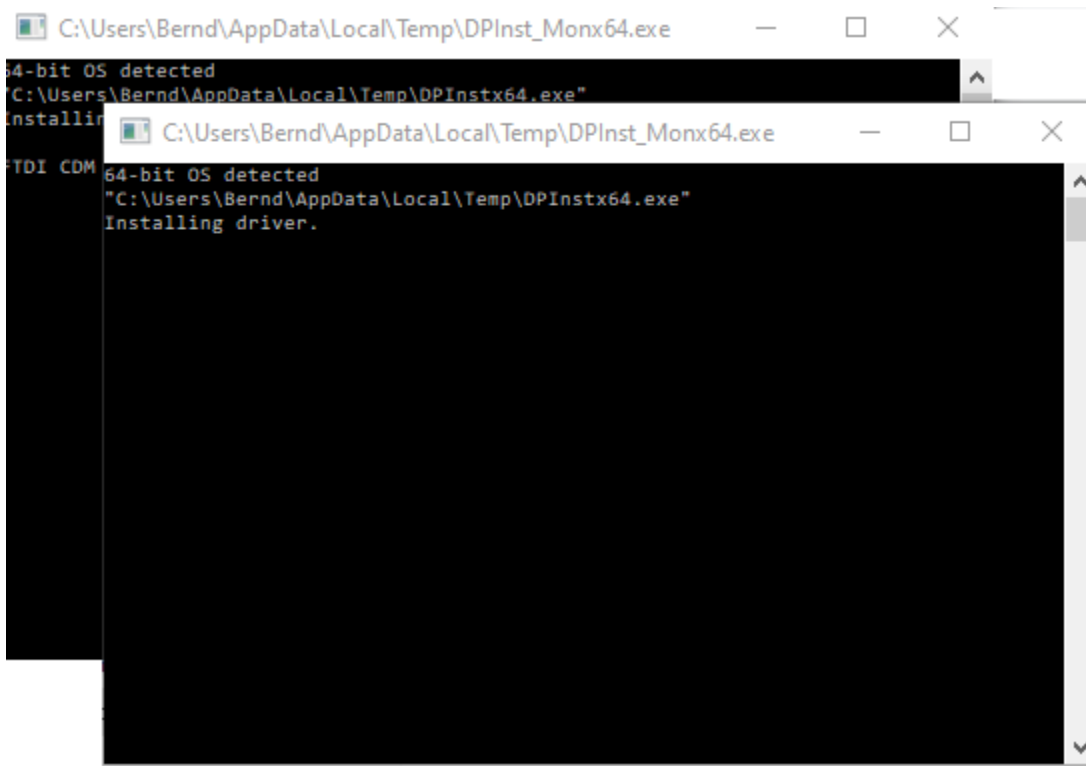
Or keep the default location and click NEXT ...

Your software will be installed.

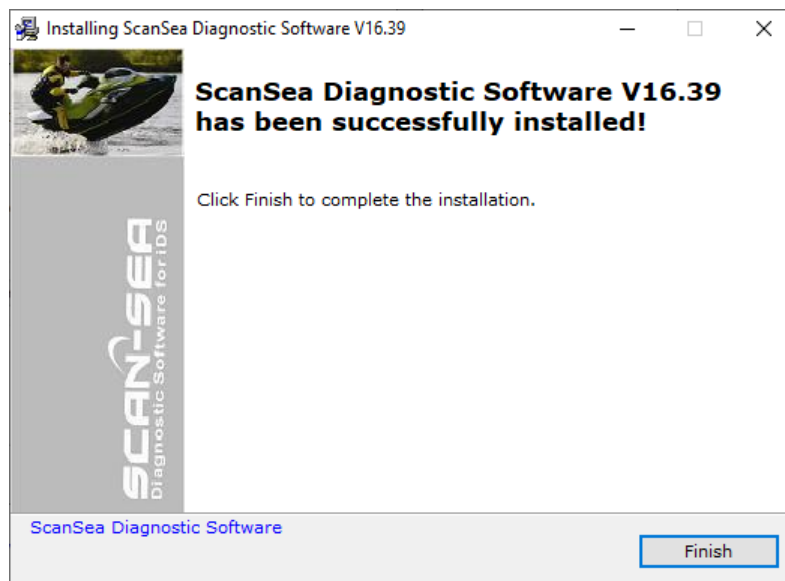


This window shows the progress of the installation.

This black driver installation windows will disappear automatically.



This window shows that the installation has finished.



Please click Finished


Please repeat the download and installation process for every software you've purchased.

After you downloaded and installed all your software applications, please go back to the download page.




UPLOAD DATE: 10/29/2020

1. Download your master software
2. De-compress in separate file folder
3. Safe files on disk, memory stick, or medium of your choice
4. Please send confirmation form when finished
5. Install software, iDS connected to computer
6. Start software (make sure computer is connected to the internet)
7. Check updates (a newer version is maybe available)




SCAN-SEA Master Software



MasterSoftwareScanSeaV1639.zip
Compressed Archive in ZIP Format [21.3 MB]

Download




Please check mark below when download completed and send!

Tom Tester download completed *


☐

☐ The Privacy Policy applies.

send



SCAN-MARINE Master Software



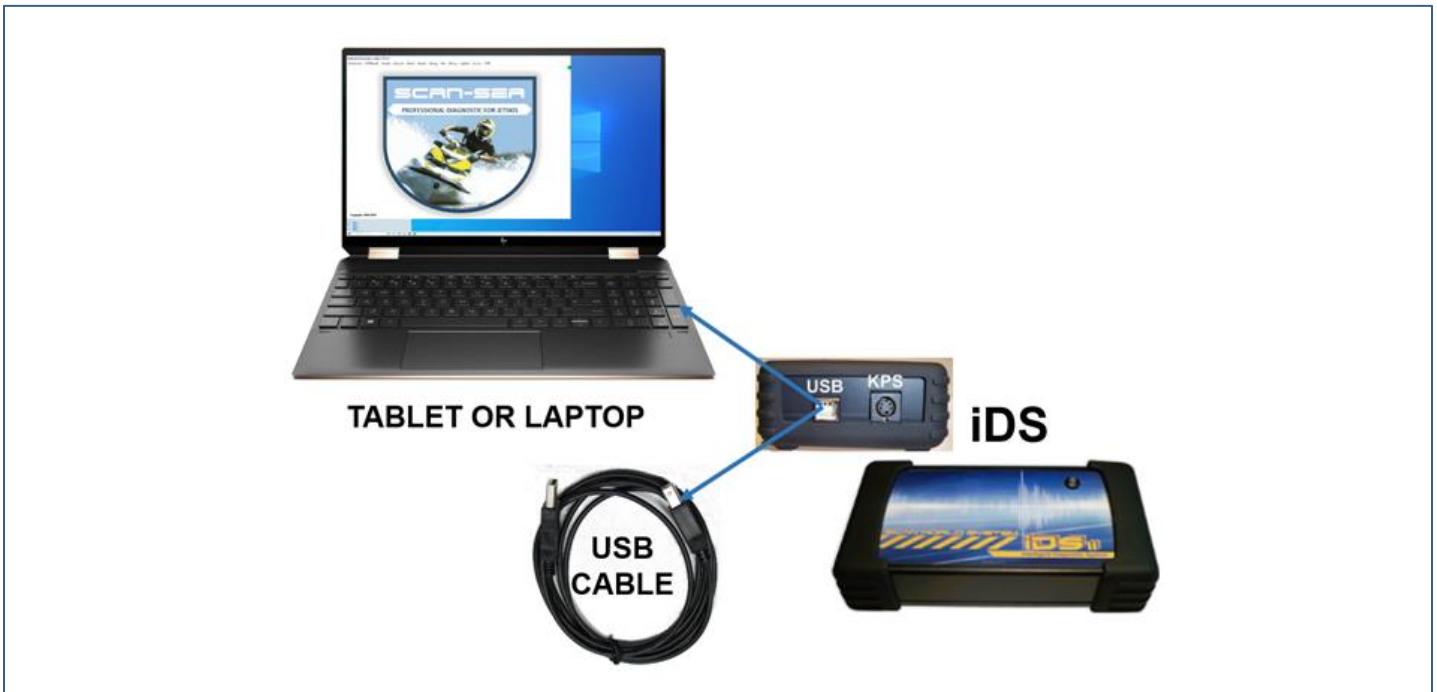
☐

☐ The Privacy Policy applies.

send

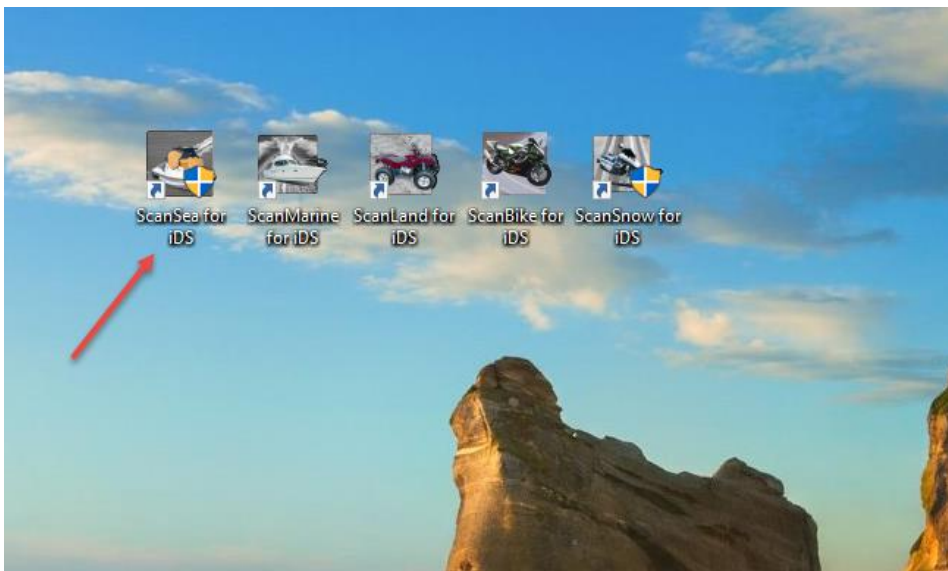
We appreciate you're confirming that the download has been finished by check marking the boxes and hit the send button.

STARTING THE SOFTWARE



Please make sure your computer is connected to the internet.

By starting the software for the first time (**make sure the iDS is connect to your computer**), the registration process will start automatically. You'll see every step of the registration on your screen. Please do NOT interrupt this process! When the registration is finished, you need to exit the software. When you re-start the software, the application is ready to use.

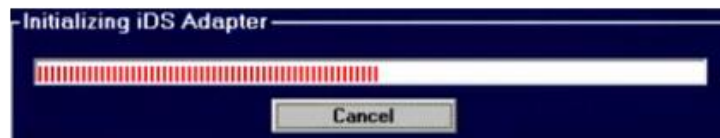


Start your software – double click on the application icon on your desktop screen.

You'll see different information in the middle of the window



"Checking iDS adapter"



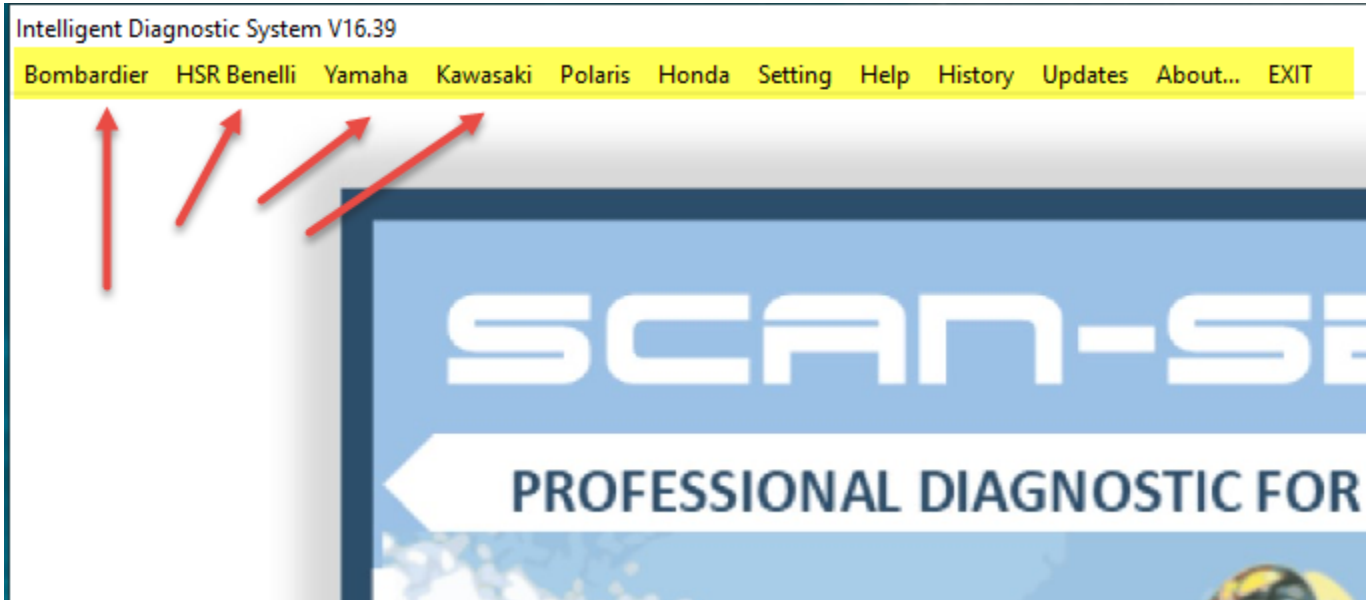
"Initializing iDS adapter"



"Registration Process"

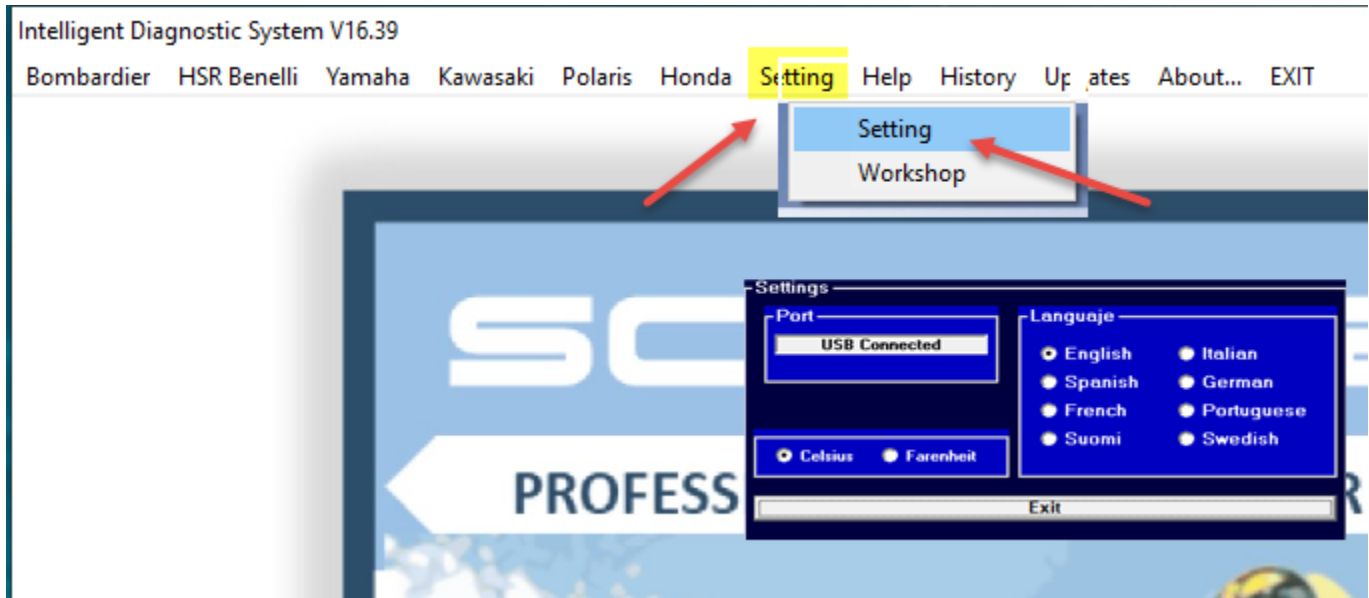
After Registration process has been finished successfully you can use your software.

You can choose from the available Brands and models



ATTENTION:

In case the software does not work in YOUR preferred language, you can switch the language.



Please just hit the “Settings” button – “Settings” below and it opens a window where you can select your preferred language! Default is either English “**Settings**” or Spanish “**Configuration**”